

THIS INSTRUMENT PREPARED BY
 DAVID P. LINDLEY
 OF
CAULFIELD and WHEELER, INC.
 SURVEYORS - ENGINEERS - PLANNERS
 7900 GLADES ROAD, SUITE 100
 BOCA RATON, FLORIDA 33434 - (561)392-1991
 NOVEMBER - 2013

GULFSTREAM PRESERVE

A PLANNED UNIT DEVELOPMENT
 BEING A REPLAT OF ALL OF TRACTS 21 THROUGH 24, 27, 28 AND A PORTION OF TRACT 25, BLOCK 28,
 PALM BEACH FARMS COMPANY PLAT NO. 3,
 AS RECORDED IN PLAT BOOK 2, PAGES 45 THROUGH 54, OF THE PUBLIC RECORDS OF PALM BEACH COUNTY, FLORIDA,
 LYING IN SECTION 29, TOWNSHIP 44 SOUTH, RANGE 42 EAST, PALM BEACH COUNTY, FLORIDA

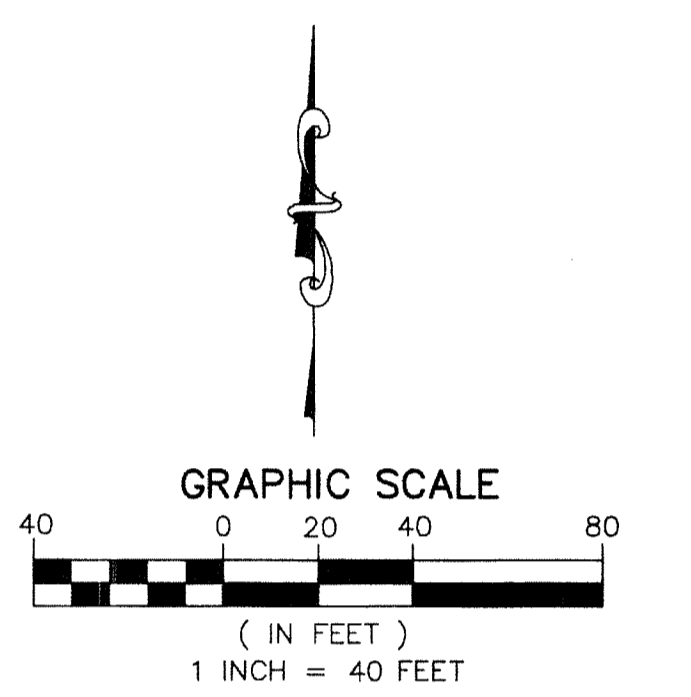
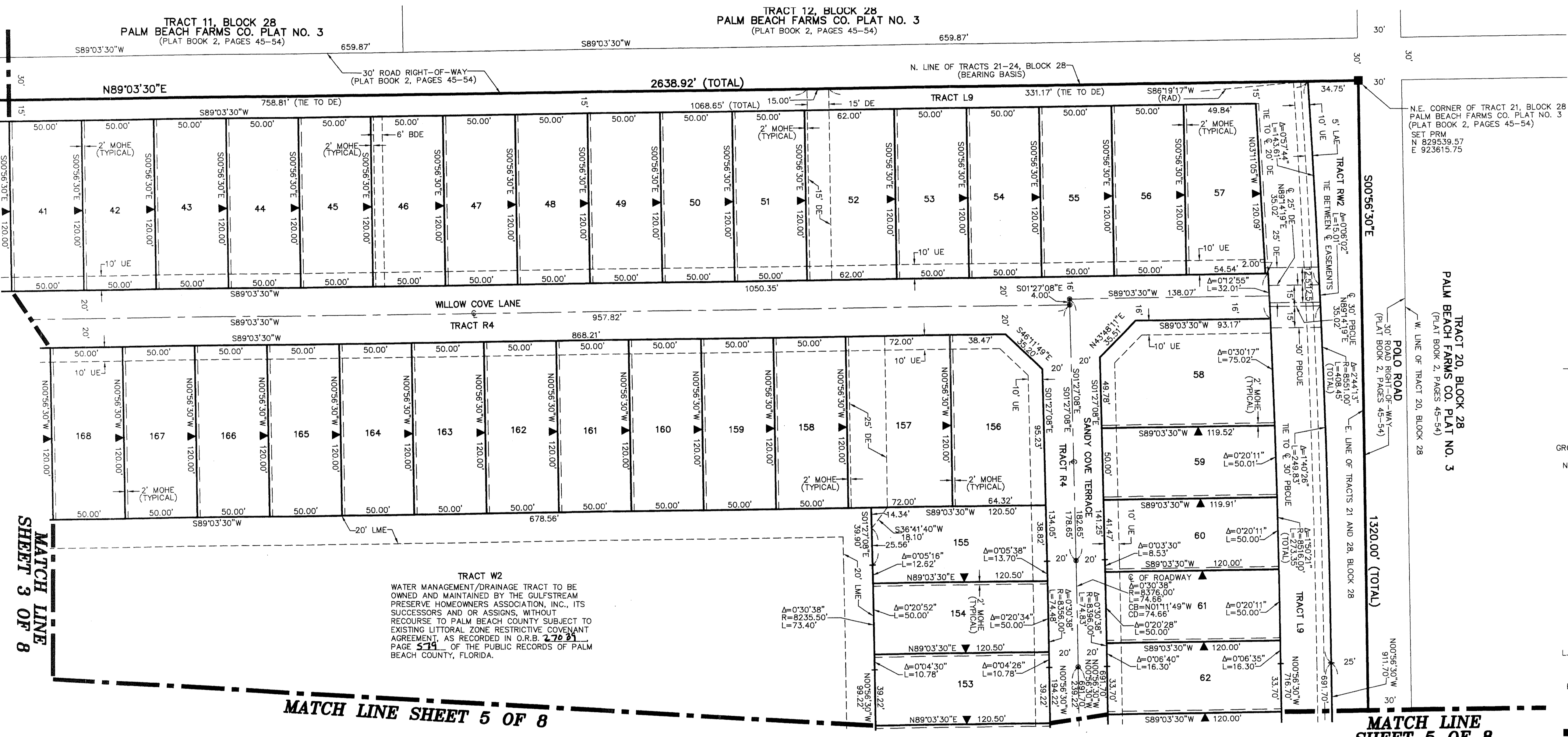
188

STATE OF FLORIDA
 COUNTY OF PALM BEACH
 THIS PLAT WAS FILED FOR
 RECORD AT _____ M.
 THIS _____ DAY OF _____
 A.D. 20____ AND DULY RECORDED
 IN PLAT BOOK _____ ON
 PAGES _____ AND _____
 SHARON R. BOCK
 CLERK AND COMPTROLLER

BY: _____
 DEPUTY CLERK
SHEET 4 OF 8

MATCH LINE
 SHEET 3 OF 8

MATCH LINE
 SHEET 3 OF 8



LEGEND/ABBREVIATIONS
 C - CENTERLINE
 Z - DELTA (CENTRAL ANGLE)
 BDE - BUFFER DRAINAGE EASEMENT
 CD - CHORD BEARING
 CD - CHORD DISTANCE
 DE - DRAINAGE EASEMENT
 E - EASTING
 L - ARC LENGTH
 LAE - LIMITED ACCESS EASEMENT
 LBS - LICENSED BUSINESS
 LBU - LANDSCAPE BUFFER EASEMENT
 LMAE - LAKE MAINTENANCE EASEMENT
 LME - LAKE MAINTENANCE EASEMENT
 L.W.D.D. - LAKE WORTH DRAINAGE DISTRICT
 N - NORTHING
 MOHE - MAINTENANCE AND OVERHANG EASEMENT
 O.R.B. - OFFICIAL RECORD BOOK
 PCBUE - PALM BEACH COUNTY UTILITY EASEMENT
 R - RADIUS
 (RAD) - INDICATES RADIAL LINE
 UE - UTILITY EASEMENT
 - INDICATES "ZERO" SIDE OF LOT LINE
 - DENOTES PERMANENT REFERENCE MONUMENT
 4" x 4" x 24" CONCRETE MONUMENT WITH ALUMINUM DISK STAMPED "PRM LB3591"
 - DENOTES PERMANENT CONTROL POINT
 NAIL AND METAL DISK STAMPED "PCP LB3591"

MATCH LINE SHEET 5 OF 8

MATCH LINE
 SHEET 5 OF 8

